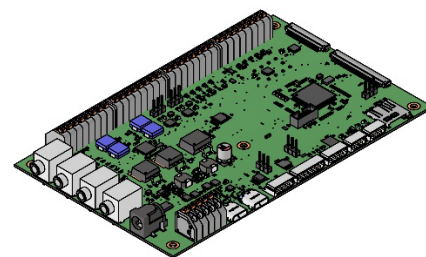




Hamso
ENGINEERING

CASHE Specification

1. SPECIFICATIONS 1
2. DRAWING 2
3. HISTORY CHANGE RECORD 3



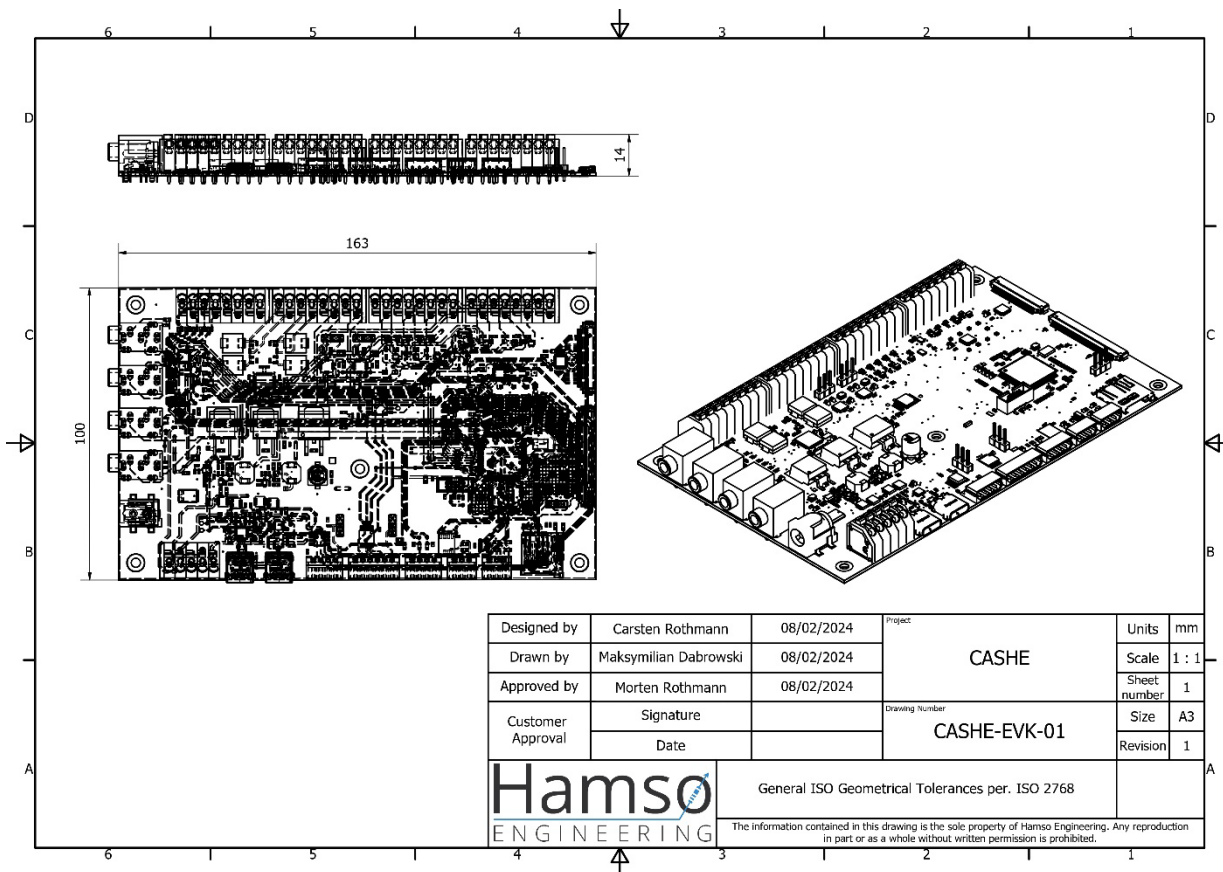
1. SPECIFICATIONS

Parameter	Unit	Conditions / Description	MIN	TYP	MAX
Dimensions	Mm	190x120x60			
Surface		Plastic (Radial Slider, 3 buttons, linear slider)			
Sensing		Capacitive			
LEDs		RGB			
Storage		Micro SD Card, FRAM			
Power input		Barreljack / USB-C PD			
Operating Voltage	V		5	5	15
Operating Power	W		10	24	80
Output Voltage	V	Micro communication, digital output		3.3 / 5	
Outputs		Analog, Digital		8	
Inputs		Digital		8	
Audio		24-bit DAC / ADC 192 kHz			
Micro communication		SPI, I2C, UART, LIN, CAN FD			
Packaging				BOX	
Weight	g			1500	

Remark:

The CASHE is an evaluation board made for designing and developing human-machine-interfaces (HMIs). Its main purpose is to assist development needs and it provides a basic foundation for various sensing methods and surface options (smart-surfaces / displays). The CASHE is an electronic device and comes in a default packaging with a POLYIC / KURZ sensing foil & plastic surface. The CASHE is built on the INFINEON PSOC 4100 S MAX. The CASHE comes with an easy-to-use GUI, called the Cashe Configurator. The CASHE Configurator gives access to all the functionalities of the CASHE.

2. DRAWING



3. HISTORY CHANGE RECORD

REV	CHANGE ITEMS		DATE
	TYPE	AFTER CHANGE	
1		Initial Version	24.11.2023
2	Review	Drawing added	09.02.2024

We engineer solutions for the future



Alsion 2
6400 Sønderborg



info@hamso.dk



+45 51 26 93 81



/hamso-engineering-aps